

**J. JOHANNSEN & SOHN**  
EST. 1896

J. Johannsen & Sohn  
Headoffice  
Schuppen 10/11  
Hafenstr. 1a  
D-23568 Lübeck

24h: +49 (0)451 - 408810  
info@johannsen-towage.com  
www.johannsen-towage.com



## FLEET SPECIFICATION SHEET

# AXEL

ASD-Tug with 42 t Bollard Pull  
Harbour Assistance  
Salvage  
Offshore Activities

Class: DNV GL 100A5 K E TUG  
MC E AUT

Year Built: 1990  
Design/Yard: Hitzler Shipyard, Lauenburg,  
Germany  
Flag: German  
Port of Registry: Lübeck  
IMO No.: 8918590

Phone: +49 174 1923059  
Email: tug-axel@johannsen-towage.com  
Call Sign: D M G Z  
MMSI: 211 266 470

### Main Dimensions

Length o. a.	29,35 m
Length WL	27,75 m
Breadth moulded	9,55 m
Breadth o. a.	10,05 m
Depth	5,00 m
Draught max.	4,20 m
Gross Tonnage	05 GT
Bollard Pull	41,90 t
Speed (100% MCR)	12,2 kn
Cruising Range (11,0 kn) abt.	3.750 nm

### Accommodation:

5 cabins (3 x single +2 x double),  
1 lavatory + 2 separate WC rooms  
1 mess,  
1 galley with provision storage  
1 storeroom with washing machine  
and dryer

### Machinery, ship's Equipment

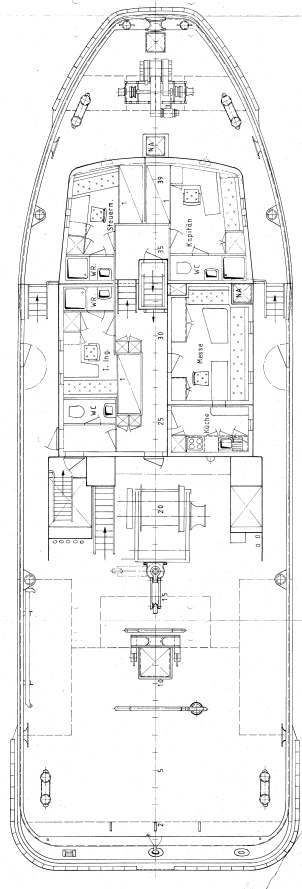
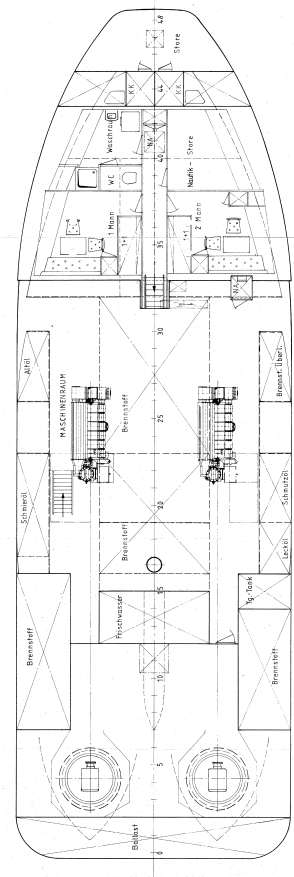
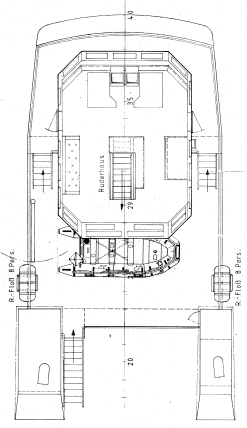
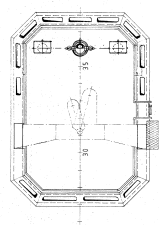
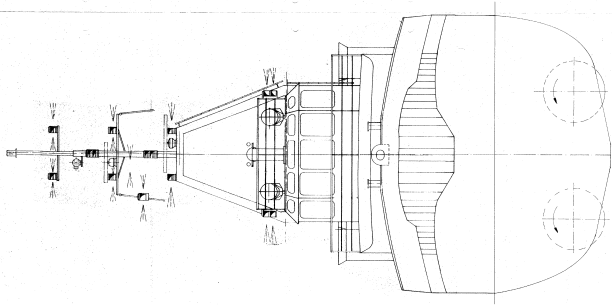
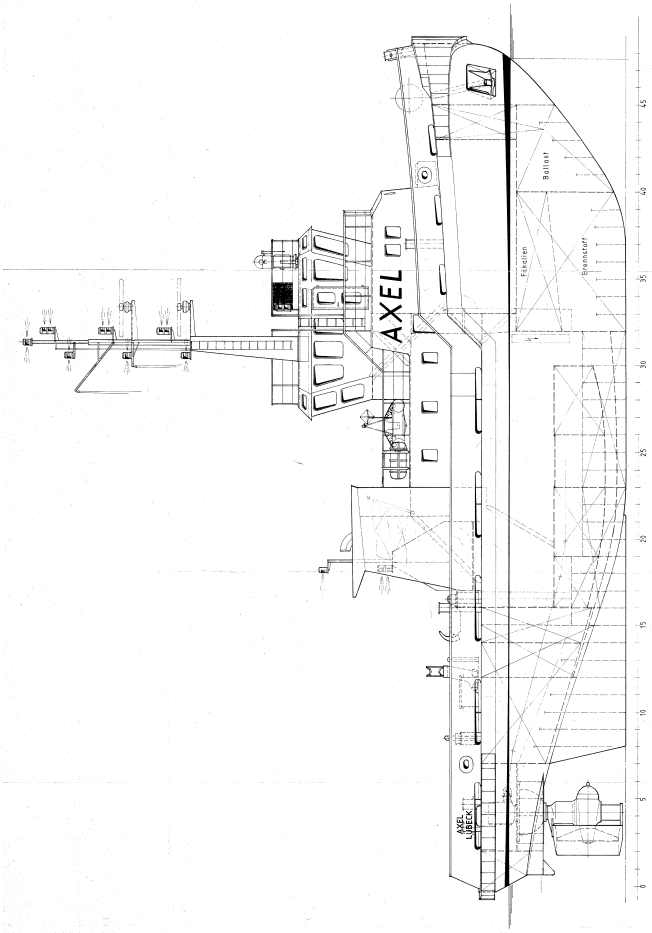
2 main engines, Deutz MWM  
2 x 1.290 kW / 1.000 rpm  
running on gas oil  
2 Schottel azimuth thrusters,  
SRP 1212 (Fixed Pitch)  
2 gensets abt. 2 x 49,5 kW  
running on gasoil  
Electr. system 400 V / 230 V - 50 Hz,  
24 V DC  
1 oil fired boiler for heating, abt. 80 kW  
2 starting air compressors, 16 m<sup>3</sup>/h, 30 bar  
1 MOB with davit  
2 life rafts

### Navigation and Communication Equipment

1 radar, 1 river radar,  
1 gyro compass, 1 auto pilot,  
GMDSS A1+A2, AIS, 2 x GPS, ECDIS,  
1 DGPS, 1 echo sounder, Navtex, etc.

### Towing Equipment

Forecastle:  
1 electr. anchor / towing winch,  
80 m wire,  
breakload lines: 1860 kN  
Working Deck:  
1 double towing winch,  
2 x 700 m wire, ø 38 mm  
breakload: 800 kN  
nom. Pull: 150 kN  
1 towing bollard  
1 hydr. towing hook, 40 t  
with quick release  
4 Double bollards



Hauptabmessungen  
 Länge über Alles ca. 29,80 m  
 Länge in der CWL 14,0m  
 Spantenabstand 28,50 m  
 Spantenanzahl 100  
 Spantenabst. 5,00 m  
 Tiefgang (CWL) 5,00 m  
 Tiefgang (CWL) 4,00 m  
 Hauptmotoren: 2x Deutz-DWV  
 Typ: 5BA 6H 620 Jc1235 kW (1660 PS)

Stapel von: J. v. 30. 04

Schiffbau-Verlag		No. S. 796	
Verlag	200 274	Verlag	200 274
Generalkat.		200 274	
1:50		1:50	
C-4284		C-4284	