

**J. JOHANNSEN & SOHN**  
EST. 1896

J. Johannsen & Sohn  
Headoffice  
Schuppen 10/11  
Hafenstr. 1a  
D-23568 Lübeck

24h: +49 (0)451 - 408810  
info@johannsen-towage.com  
www.johannsen-towage.com



## FLEET SPECIFICATION SHEET

# CARL

ASD-Tug with 52 t Bollard Pull  
Port  
Terminal  
Salvage  
Offshore Activities

Class: DNV GL 1A1 TUG EO  
Year Built: 1995  
Design/Yard: East Isle Shipyard, Canada  
Flag: German  
Port of Registry: Lübeck  
IMO No.: 9112739

Phone: +49 176 47853606  
Email: tug-carl@johannsen-towage.com  
Call Sign: D K E Y  
MMSI: 211 749 880

### Main Dimensions

GT:	397
Length.o.a.:	30,80m
Breadth moulded:	11,14m
Depth:	5,21m
Draft max.:	4,80m
Draft operational:	4,80m
Air draft:	17m

### Engines / Propulsion

Propulsion: 2 x Aquamaster Z-Drives (US 1701/3250)  
Bow Thruster: 1 x Mjasundet S-150 180 HK  
Main Engines: 2 x Caterpillar 3516TA, 2x 1.493 kW  
Gensets: 2 x Caterpillar, 3306 DITA, 2x165 kW,  
Electr. System: 440 V / 110 V - 60 Hz

### Safety / Rescue

Fire Fighting Equipment:  
Firepumps: 1 x 800 m<sup>3</sup>/h at 15 bar  
Firemonitors: 2 x 6666 l/min. Throwlength 85m  
Other: Protection Equipment  
Lifesaving appliances for 8 persons (LSA approved)  
1 Rescue Boat  
2 x 12 Pax Life Rafts

### Towing / Deck Equipment

Forecastle:  
Towing winch Burrard Iron Works model HF  
Single drum auto spooling, break force: 108 t  
150m sythetic line,

### Speed / Consumption

Speed 100% MCR	13 knots
MGO at 10knots:	abt. 280 l / h
MGO at 9 knots:	abt. 240 l / h

### Bridge Equipment

GMDSS A1 / A2  
AIS  
2 Radars  
DGPS  
1 x MF / HF  
2 x VHF  
2 x mobile VHF  
Mobile GSM Phone  
Gyro / Sat. Compass  
ECDIS  
Navtex  
Echo Sounder  
Auto Pilot  
2 x Searchlights  
BMWAS 800

### Working Deck:

Towing winch Ridderinkhof TW-E-316-97-8107 single drum auto spooling, break force: 109 t, 1 x 900m wire, ø 48mm,  
Capstan, hydr. Towing pin (40t), Double Bollards.  
Deck Crane: 1 x 11,6m Tm, Type Palfinger

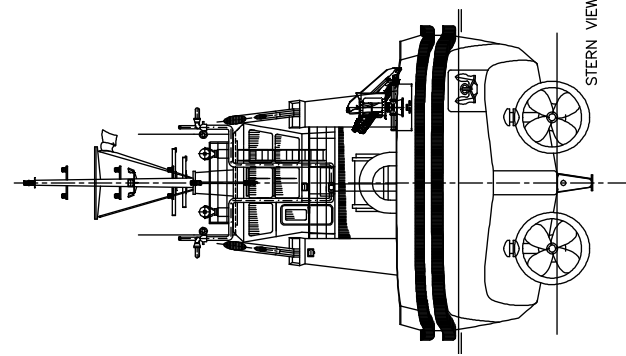
### Capacities

Marine Gas Oil:	224 m <sup>3</sup>
POT Water:	36 m <sup>3</sup>
Ballast Water:	33 m <sup>3</sup>

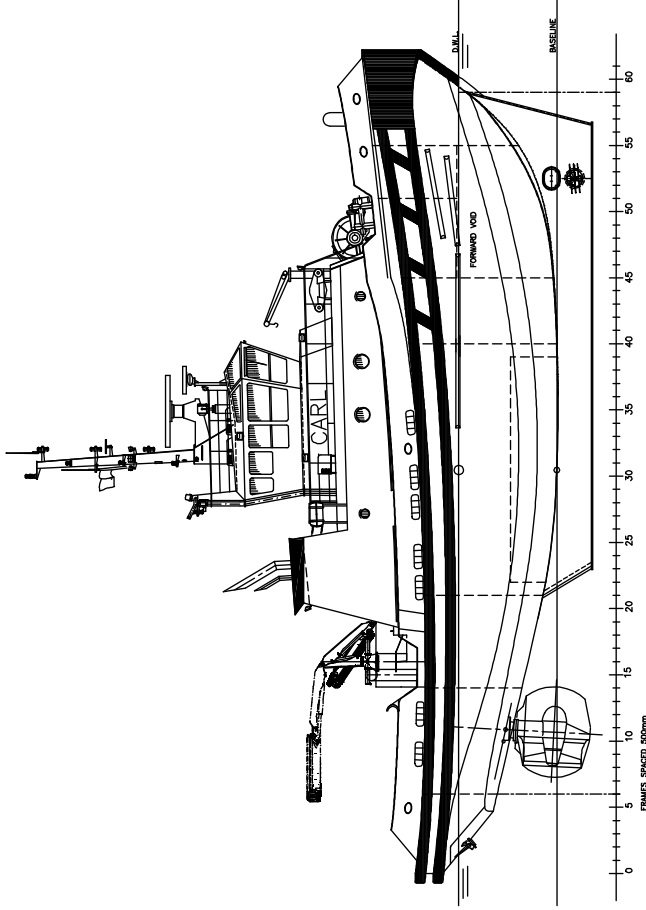
Accommodation:  
4 Cabins (2 x single, 2 x double)  
6 Berths

Diverse additional towing equipment:

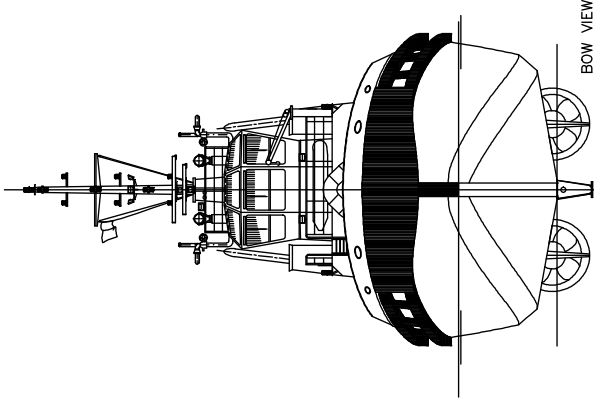
Certified chains, bridle, shackles, hawsers, spare wires, dyneema wires, pennants, mobile navigation lights for towages and salvage operations.



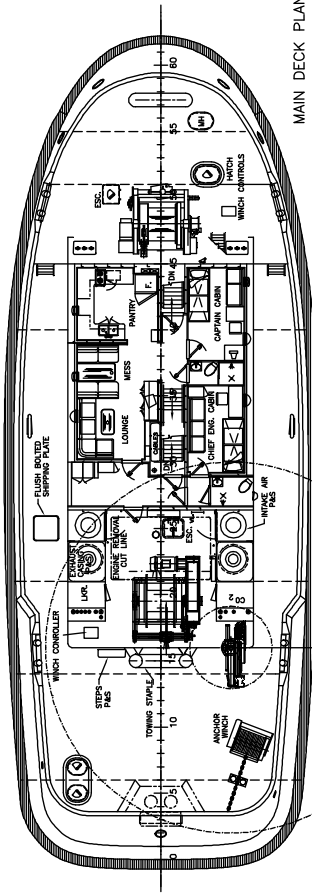
STERN VIEW



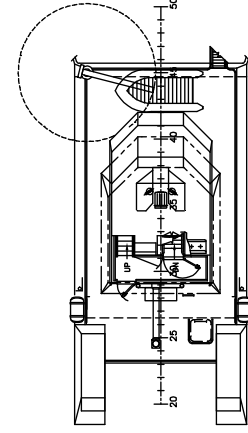
FRAMES SPACED 500mm



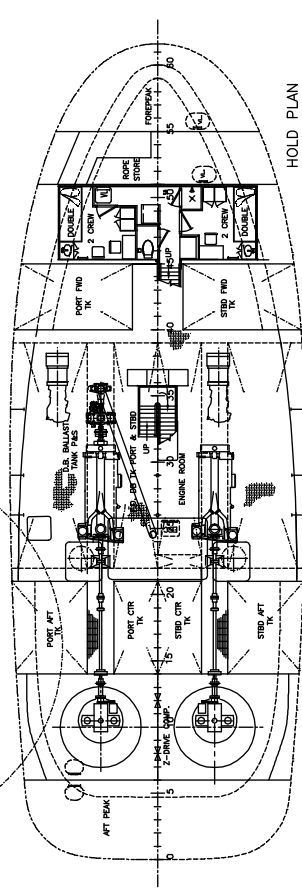
BOW VIEW



MAIN DECK PLAN



BOAT AND BRIDGE DECKS



HOLD PLAN

**PARTICULARS**

- LOA mid. : 30.80 m
- LOA extreme : 31.50 m
- BEAM mid. : 11.14 m
- BEAM extreme : 11.86 m
- DEPTH mid. at Lpp/2 (skeg not included) : 5.21 m
- DRAFT at Dwl : 5.05 m
- CREW : 3
- TRADE : 5 HARBOUR
- : 5 COASTAL
- : NORTH & BALTIC SEA

C	Corrected FIFI monitors etc.	20.10.2000	Ao.F
B	Added box keel, bow thruster, FIFI	15.06.2000	V.F.
A	Revised by Carl J. Amundsen as	29.03.2000	Ao.F.
Drawn/checked by : V.Fjelland/Ao.F.			
<b>MV "CARL"</b>			
J.Johannsen & Sohn Seeschlepp und -transport GmbH			
TITLE:	<b>GENERAL ARRANGEMENT</b>	SCALE:	1:200/1:100
		DATE:	
	ROBERT ALLAN LTD. and Carl J. Amundsen AS	CAD FILE/DRAWING NO.:	GArevC
	oage@c.jamundsen.no, +47 5272 6688	REVISION	C
		SP. NO.:	101
		PILOT DATE:	